

# Jetson L4





## Jetson L4

Jetson L4 is a huddle space for up to four people, perfect to talk and debate, free from distractions. Thanks to adjustable seats and shelves to decorate with books, posters, and plants, everyone can feel at home here. The ventilation exchanges air inside almost 40 times an hour to keep users' minds sharp and ideas fresh.

Jetson is a family of universal acoustic pods designed to make everyone's work joyful and fruitful. It's truly people-focused: comfortable and customizable through add-on sets to meet your need and vision. Made of extruded aluminum, which makes it the lightest and most environmentally-friendly pod on the market. With its durable construction, no-hassle assembly, effective sound attenuation, and attractive price, Jetson will introduce the benefits of acoustic pods to all.

### FUNCTION

---

Meeting, collaboration or focused work

### ACOUSTICS

---

Insulation

### USAGE

---

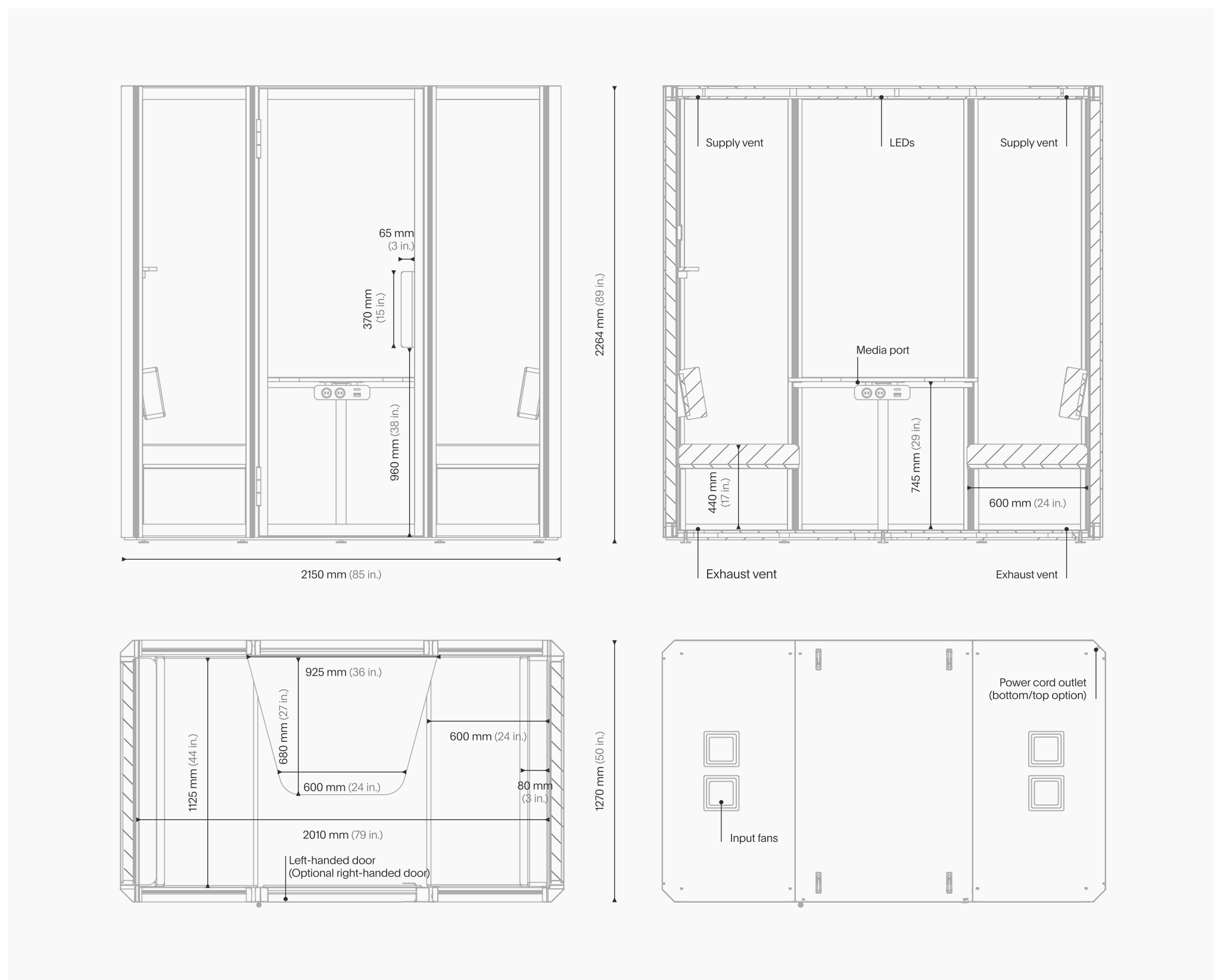
Open space

Reception

Breakout area

Other public spaces

# Dimensions & weight



## Pod

| DIMENSIONS | EXTERIOR / INTERIOR  | WEIGHT          |                   |
|------------|--|-----------------|-------------------|
| Width      | 2150 mm (85 in.) / 2010 mm (79 in.)  | Pod weight      | 460 kg (1014 lbs) |
| Depth      | 1270 mm (50 in.) / 1125 mm (44 in.)<br>+ 800 mm (32 in.) with an open door | Shipment weight | 515 kg (1135 lbs) |
| Height     | 2264 mm (89 in.) / 2102 mm (83 in.)<br>+ 36 mm (1.4 in.) with casters      |                 |                   |

## Packing (cartboard flat-packs – 10 layers)

| DIMENSIONS |                  | WEIGHT         |                |
|------------|------------------|----------------|----------------|
| Width      | 2280 mm (90 in.) | Wooden pallet  | 29 kg (64 lbs) |
| Depth      | 1280 mm (51 in.) | Plywood pallet | 40 kg (88 lbs) |
| Height     | 1370 mm (54 in.) |                |                |

### POSSIBILITY OF STOCKING

|                |   |
|----------------|---|
| Number of pods | 2 |
|----------------|---|

# Technical data

## ACOUSTIC RESULTS

|                            |   |
|----------------------------|---|
| Speech level reduction     | $D_{S,A} = 26,5$ dB, class B, ISO 23351-1 |
| Range of level reduction D | 16,9–35,5 dB (125–8000 Hz)                |
| Sound insulation           | ISO 10140-2                               |
| • Glass wall (6 mm ESG)    | $R_w = 33$ dB, $R_{A1} = 32$ dB           |
| • Solid wall               | $R_w = 38$ dB, $R_{A1} = 36$ dB           |
| Reverberation time inside  | 0,2 s (250–4000 Hz) – ISO 354:2005        |

## POWER CONSUMPTION AND LIGHTING

|                                    |                                   |
|------------------------------------|-----------------------------------|
| Standby                            | 7,2 W                             |
| Working (fan, LEDs)                | 43,5 W                            |
| Power supply voltage               | 220-240 VAC, 50-60 Hz             |
| Light source                       | 708 mm LED strip                  |
| Brightness on the tabletop surface | 400 lux                           |
| LED power consumption              | Max 13 W                          |
| LED supply voltage                 | 24 V DC                           |
| Color temperature / brightness     | 4000 K / 2050 lm/m                |
| Light control                      | Occupancy sensor, auto start/stop |

## COMPOSITION

- Aluminium structure and steel elements
- Plywood and melamine faced chipboard
- Isolating and absorbing materials
- Tempered glass
- Felt

## CERTIFICATES AND TESTS

- ISO 14001, ISO 9001
- VOC (PN-EN ISO 16000-9) and Formaldehyde (EN 717-1:2006) tested
- Formaldehyde (EN 717-1:2006) tested
- Speech reduction tested acc. to ISO 23351-1:2020
- Reaction to fire tested acc. to EN-13501-1:2018

## VENTILATION

|                           |                                   |
|---------------------------|-----------------------------------|
| System airflow            | 160 m <sup>3</sup> /h             |
| Nominal airflow           | 730 m <sup>3</sup> /h             |
| Air change rate (ACPH)    | 33 / h                            |
| Fan emitted noise outside | 39 dBA                            |
| Fan emitted noise inside  | 38 dBA                            |
| Ventilation operation     | Occupancy sensor, auto start/stop |
| Fan supply voltage        | 24 V DC                           |

## MEDIA PORT (FPD UNIT)

|                                 |                                    |
|---------------------------------|------------------------------------|
| Power supply voltage            | 220-240 VAC, 50-60 Hz              |
| Power sockets in a mediaport    | 2                                  |
| USB fast charger in a mediaport | TUF A+C 30 W                       |
| Max load of power sockets       | 10 A                               |
| Mounting system                 | Included, desk mount               |
| LAN port                        | Possibility to route the LAN cable |
| Available socket types          | FR / DE / UK / CH / AU / DK* / IT* |

\*The appearance of the media port may differ from that shown in the renderings. Parameters and features remain unchanged.

## WARRANTY

We offer a 5-year warranty and a 5-year right to repair. What is more, Jetson is made entirely of easily replaceable components. So, if you ever do need to repair Jetson, it's quick, cheap, and simple.



0%  
Formaldehyde  
VOC tested



# Equipment

## STANDARD EQUIPMENT

- Ventilation system
- LED light 4000K
- Occupancy sensor
- Media port with 2 power and A+C USB sockets
- Profiled tabletop
- 2x sofa with height-adjustable backrest
- Shallow shelf with display rail and magnet
- 2x wall hook
- Power cord 3 m (118 in.)

## ADDITIONAL EQUIPMENT

### + Monitor hanger

A flexible mounting system designed to accommodate screens of various sizes (VESA 100-200-300), providing an ergonomic and space-efficient solution for digital collaboration.

### + Occupancy light

An external indicator light that signals when the pod is in use. The light glows red when the pod is occupied and turns off when it is available.

### + LAN cable cat. 6a

A high-performance Ethernet cable that enables stable, high-speed internet connectivity, ensuring seamless communication and efficient workflow.

### + LED light 3000 K

A warm lighting option that enhances the ambiance, creating a cozy and inviting atmosphere inside the pod.

### + Control panel

A user-friendly interface that allows easy adjustment of lighting and ventilation, ensuring a personalized and comfortable workspace tailored to individual preferences.

### + Casters

Casters that provide effortless mobility, allowing the pod to be easily repositioned. When casters are installed, the pod's total height increases by 36 mm (1.4 in.)

# Equipment dimensions and weight

## TABLETOP

|            |                  |
|------------|------------------|
| Width      | 925 mm (36 in.)  |
| Depth      | 680 mm (27 in.)  |
| Height     | 745 mm (29 in.)  |
| Weight     | 11 kg (24 lbs)   |
| Total load | 40 kg (88.2 lbs) |

## SOFA

|             |                    |
|-------------|--------------------|
| Width       | 1125 mm (44 in.)   |
| Depth       | 600 mm (24 in.)    |
| Seat height | 440 mm (17 in.)    |
| Weight      | 25 (55 lbs)        |
| Total load  | 180 kg (396.8 lbs) |

## MONITOR HANGER (ADDITIONAL)

|            |                 |
|------------|-----------------|
| Width      | 838 mm (33 in.) |
| Height     | 429 mm (17 in.) |
| Total load | 50 kg (110 lbs) |

## DISPLAY RAIL

|        |                  |
|--------|------------------|
| Width  | 1107 mm (44 in.) |
| Height | 75 mm (3 in.)    |
| Weight | 1,8 kg (3,9 lbs) |

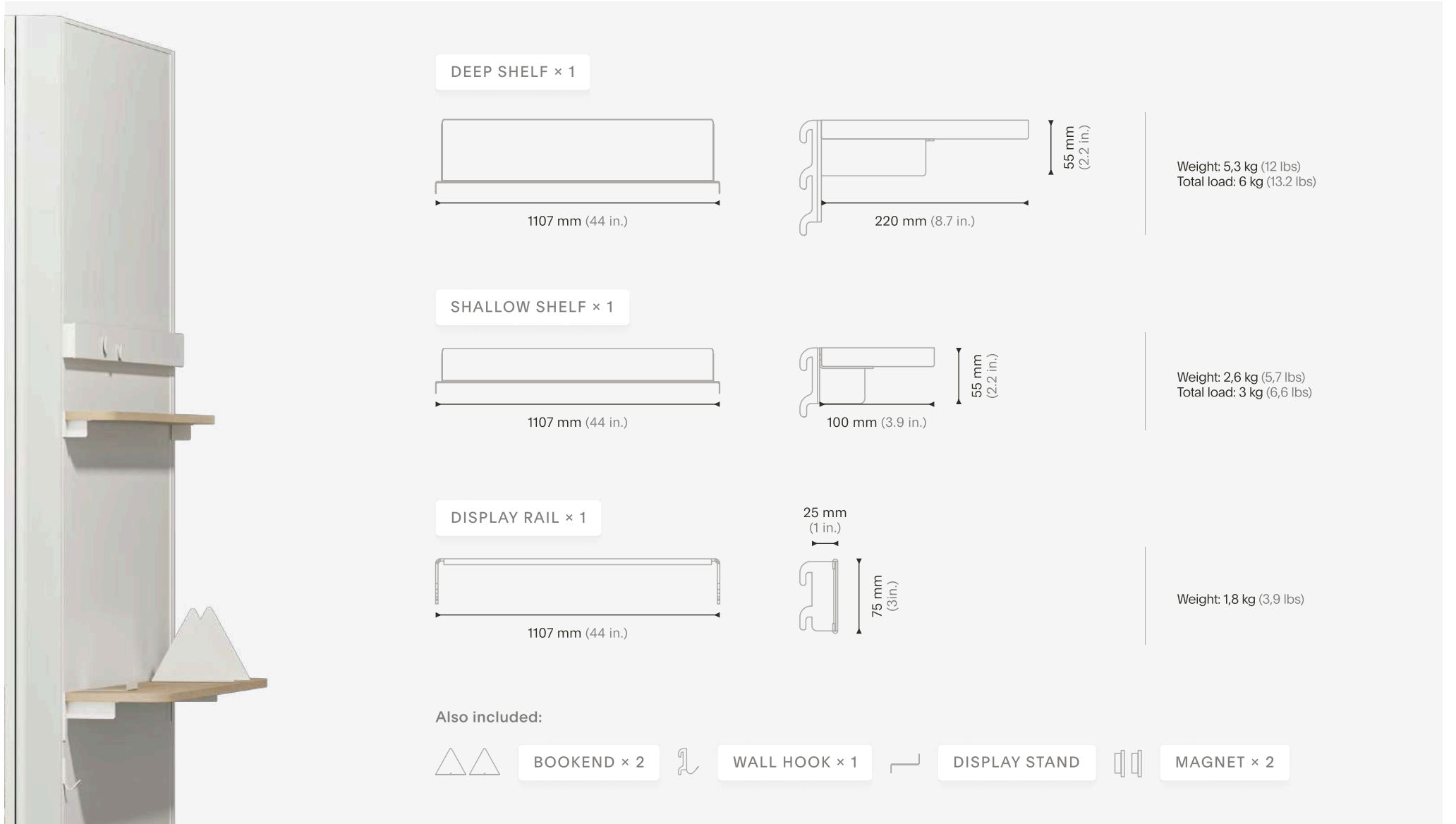
## SHALLOW SHELF

|            |                  |
|------------|------------------|
| Width      | 1107 mm (44 in.) |
| Height     | 55 mm (2,2 in.)  |
| Weight     | 2,6 kg (5.7 lbs) |
| Total load | 3 kg (6,6 lbs)   |

# Add-on sets

## Library set

Weight: 11 kg (24 lbs) | With packaging: 12,8 kg (28 lbs)



**DEEP SHELF × 1**

1107 mm (44 in.)

220 mm (8.7 in.)

55 mm (2.2 in.)

Weight: 5,3 kg (12 lbs)  
Total load: 6 kg (13.2 lbs)

**SHALLOW SHELF × 1**

1107 mm (44 in.)

100 mm (3.9 in.)

55 mm (2.2 in.)

Weight: 2,6 kg (5,7 lbs)  
Total load: 3 kg (6,6 lbs)

**DISPLAY RAIL × 1**

1107 mm (44 in.)

25 mm (1 in.)

75 mm (3 in.)

Weight: 1,8 kg (3,9 lbs)

Also included:

BOOKEND × 2

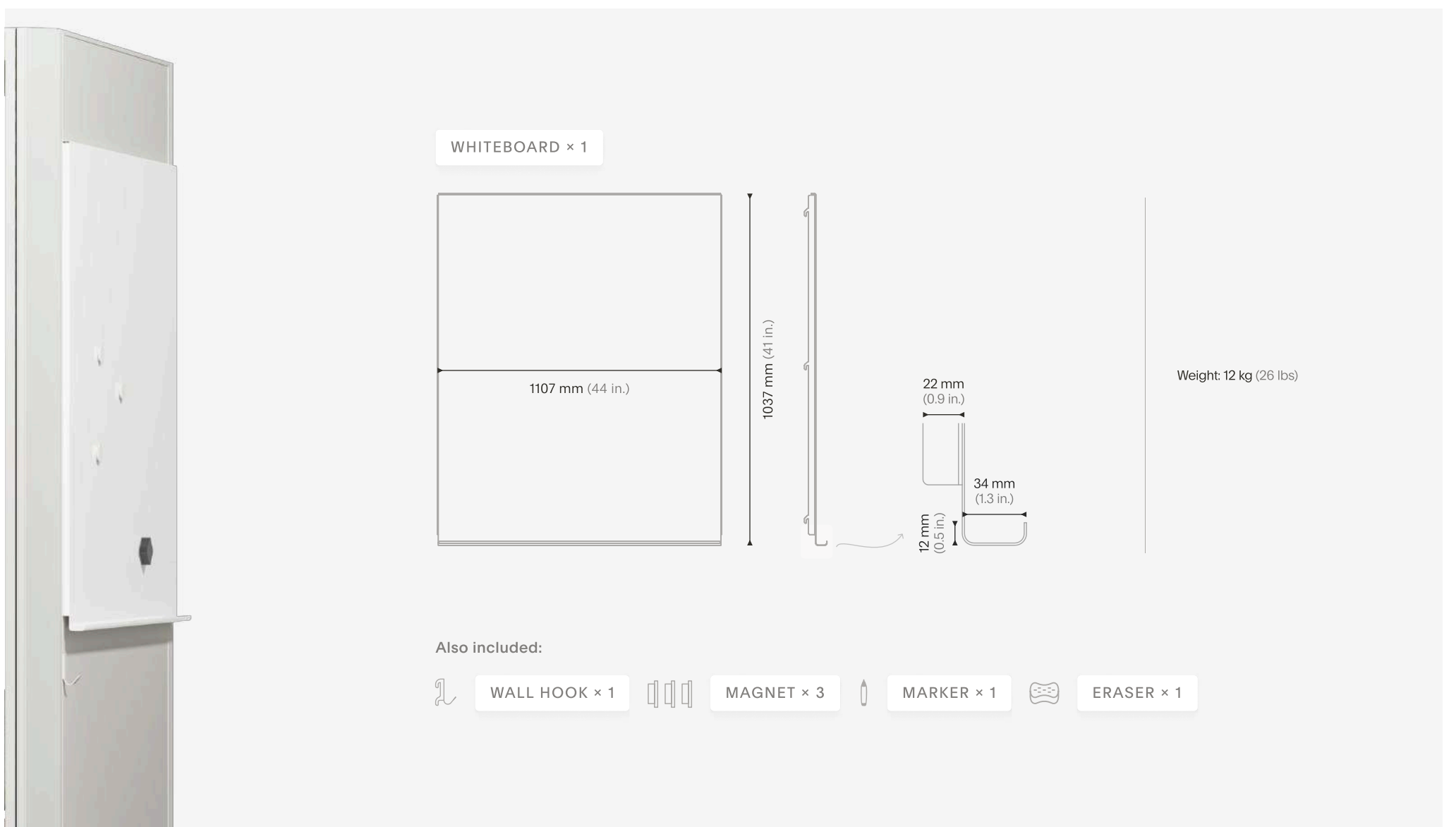
WALL HOOK × 1

DISPLAY STAND

MAGNET × 2

## Note set

Weight: 12,5 kg (28 lbs) | With packaging: 15 kg (33 lbs)



**WHITEBOARD × 1**

1107 mm (44 in.)

1037 mm (41 in.)

22 mm (0.9 in.)

34 mm (1.3 in.)

12 mm (0.5 in.)

Weight: 12 kg (26 lbs)

Also included:

WALL HOOK × 1

MAGNET × 3

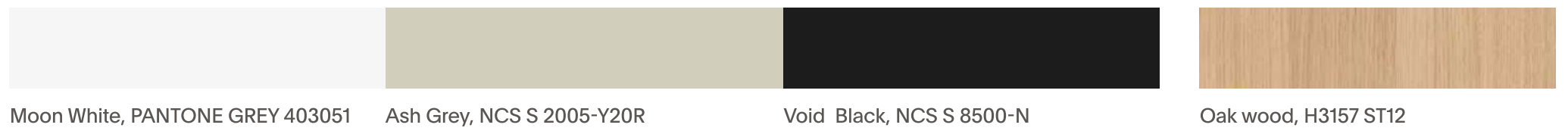
MARKER × 1

ERASER × 1

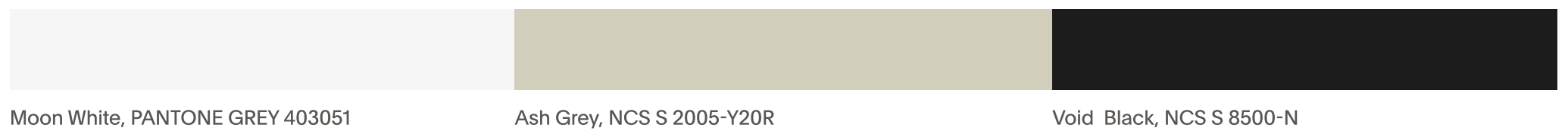
# Finishes overview



## 1 EXTERIOR WALLS - MELAMINE



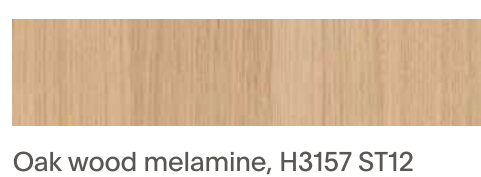
## 2 FRAME - ALUMINUM



## 3 INTERIOR WALLS AND CEILING



## 4 TABLETOP AND SHELVES



## 5 SEATING UPHOLSTERY



## 6 BOOKENDS AND MAGNETS



## 7 FLOOR

